

# DATA SHEET

HEAVY FOIL

## soni HEAVY | soni HEAVY ALU

- ▶ **soni HEAVY** is a heavy layer made from elastomer-modified bitumen. Its surface is protected by a transparent polyester film.
- ▶ **soni HEAVY ALU** is a sound-deadening layer made from elastomer-modified bitumen with an aluminum surface. The heat-reflecting effect of the aluminum layer provides **soni HEAVY ALU** with a good fire safety classification.
- ▶ Our heavy layer **soni HEAVY** and **soni HEAVY ALU** is widely used for technical applications as well as in sanitary and plumbing pipes and downspouts.



### TECHNICAL DATA

<b>FLAMMABILITY</b>	<ul style="list-style-type: none"> <li>▶ Fulfills the strict fire safety standard for the automotive industry (fMVSS 302, DIN 75 200)</li> <li>▶ ISO 3795, burning rate &lt; 100 mm/min</li> <li>▶ EN 45545-2: requirement r1, HL 3 fulfilled (soni HEAVY ALU)</li> <li>▶ ECE R-118, annexes 6, 7 + 8 fulfilled (soni HEAVY)</li> </ul>
<b>TEMPERATURE RESISTANCE</b>	▶ -30°C to +100°C (if placed on a steel surface)
<b>ADHESION TO STEEL SHEET</b>	▶ > 15N/5 cm at 20°C (acc. to Cellofoam test instruction 4.01)

### DIMENSIONS

PRODUCT	THICKNESS / TOLERANCE [mm]	SHEETS / TOLERANCE [mm]	WEIGHT PER SHEET
HEAVY	1.8 ± 0.2	1000 x 500 ± 5	1.500 g
	2.7 ± 0.8	1000 x 500 ± 5	2.500 g
HEAVY ALU (ROLL)	1.5 ± 0.5	10000 x 500 ± 5	14.500 g

### ADVICE

▶ The self-adhesive layer functions primarily as an installation aid. In case of vertical or overhead installation, additional mechanical fixation is required. An additional function of the self-adhesive layer is to ensure that the heavy foil is closely attached to the entity of the supporting surface for optimum noise attenuation results.

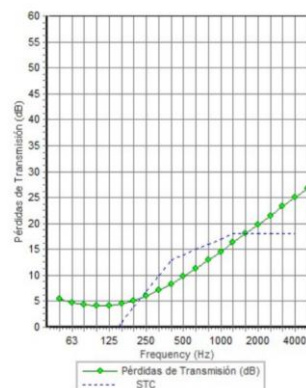
### VORTEILE

- ▶ Excellent sound insulation values
- ▶ Eliminates vibrations and drumming of sheet metal and metal parts
- ▶ High temperature resistance
- ▶ Reflection of heat radiation (soni HEAVY ALU)
- ▶ Good flammability rating and excellent absorption values (soni HEAVY ALU)
- ▶ Excellent sound insulation values (soni HEAVY ALU)
- ▶ Airborne sound insulation and solid-borne sound attenuation in a single product

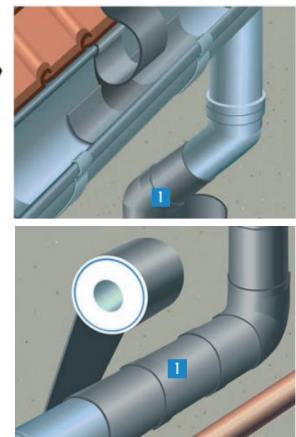
### SOUND TRANSMISSION LOSS

▶ Test procedure similar to DIN EN ISO 10140-2

frecuencia (Hz)	TL(dB)	TL(dB)
50	5	
63	5	5
80	4	
100	4	
125	4	4
160	5	
200	5	
250	6	6
315	7	
400	8	
500	10	10
630	11	
800	13	
1000	15	14
1250	16	
1600	18	
2000	20	20
2500	22	
3150	23	
4000	25	25
5000	27	



STC 14  
ORTC 10



HEAVY FOIL

### PLEASE SEE OUR PROCESSING AND STORAGE INSTRUCTIONS

Details and values given in this leaflet are average values and have been compiled with care. They are not binding, however, and Cellofoam International GmbH & Co. KG disclaims any liability for any damages and detriments, also in connection with any third party's rights. The information given does not release the buyers from making the necessary experiments and tests themselves. Subject to technical changes. For updates please go to our website.

Cellofoam International GmbH & Co. KG  
Business unit soniflex  
p: +49 7351 340 28 61  
sales@soniflex.de / www.soniflex.de

### VERSION 06/21

Distribution partner for Switzerland:  
soniflex Switzerland  
p: +41 44 377 60 50  
einkauf@soniflex.ch / www.soniflex.ch